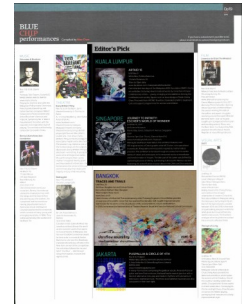
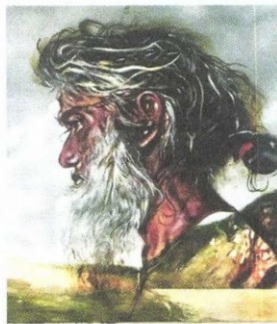


Headline	Editors Pick		
MediaTitle	The Edge		
Date	07 Nov 2016	Color	Full Color
Section	Options	Circulation	23,635
Page No	OP19	Readership	70,905
Language	English	ArticleSize	390 cm ²
Journalist	N/A	AdValue	RM 4,586
Frequency	Weekly	PR Value	RM 13,758



Editor's Pick

KUALA LUMPUR



ARTAID 16

Until Nov 9

White Box, Publika Dutamas

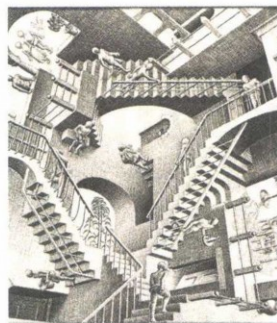
1 Solaris Dutamas, KL

10am to 10pm daily

www.facebook.com/malaysianaidfoundation

Catch the last two days of the Malaysian AIDS Foundation (MAF) charity art exhibition, featuring mixed media artworks by more than 40 local contemporary artists – young, emerging and established. Among the contributors are society figures such as shoe designer Datuk Jimmy Choo. Proceeds from ARTAID 16 will be channelled to MAF's treatment, care and support programmes for women and children.

SINGAPORE



JOURNEY TO INFINITY: ESCHER'S WORLD OF WONDER

Until Feb 16, 2017

ArtScience Museum

Marina Bay Sands, 6 Bayfront Avenue, Singapore

SS17

10am to 7pm (Sat–Thurs), 10am to 9pm (Fri)

www.marinabaysands.com/museum

Making its Southeast Asian debut, this exhibition features over 150 original works of Dutch graphic artist MC Escher, who specialised in woodcuts, lithographs and mezzotints inspired by mathematical precision. The exhibition is narrated through six zones, from his earlier works of nature and landscapes to his renowned works on tessellation and transformation of shapes. The later part of his career was defined by captivating illusions of infinity. Culminating it all is *Escher Mania*, a section illustrating his wide influence on pop culture in the 20th and 21st centuries.

Headline	Editors Pick		
MediaTitle	The Edge		
Date	07 Nov 2016	Color	Full Color
Section	Options	Circulation	23,635
Page No	OP19	Readership	70,905
Language	English	ArticleSize	390 cm ²
Journalist	N/A	AdValue	RM 4,586
Frequency	Weekly	PR Value	RM 13,758

BANGKOK

TRACES AND TRAILS

Until Nov 20
8th floor, Bangkok Art and Culture Centre
Rama Road, Pathum Wan, Bangkok
10am to 9pm (Tues-Sun)
www.bacc.or.th

Held in honour of influential Thai contemporary artist Pratuang Emjaroen, this exhibition provides an overview of his prolific career that has spanned five decades. Self-taught Emjaroen became well-known for his works on the vicissitudes of life, social problems, nature and Buddhism. In 2005, he received the National Artist of Thailand Award in Visual Arts from the National Cultural Commission.



ประเทือง เอมเจริญ
"ร้อยเรียงสรรพสิ่งสรร" ตำบลชีวิตและสังคม

ThalBev

JAKARTA



PUSPALLIA & CIRCLE OF 4TH

Nov 9 to 11 (8pm)
Motion Blue Jakarta, Fairmont Jakarta 3rd Floor
Jl. Asia Afrika No. 8, Gelora Bung Karno, Jakarta
IDR150,000
www.motionbluejakarta.com

A newly-formed trio comprising Puspallia on vocals, Arnando Putra on guitar and Iwan Paul on drums, the band has its roots in jazz but with a blend of alternative rock, pop and modern rhythms with elements of Indonesia's traditional music. The three accomplished musicians are also composers in their own right.